

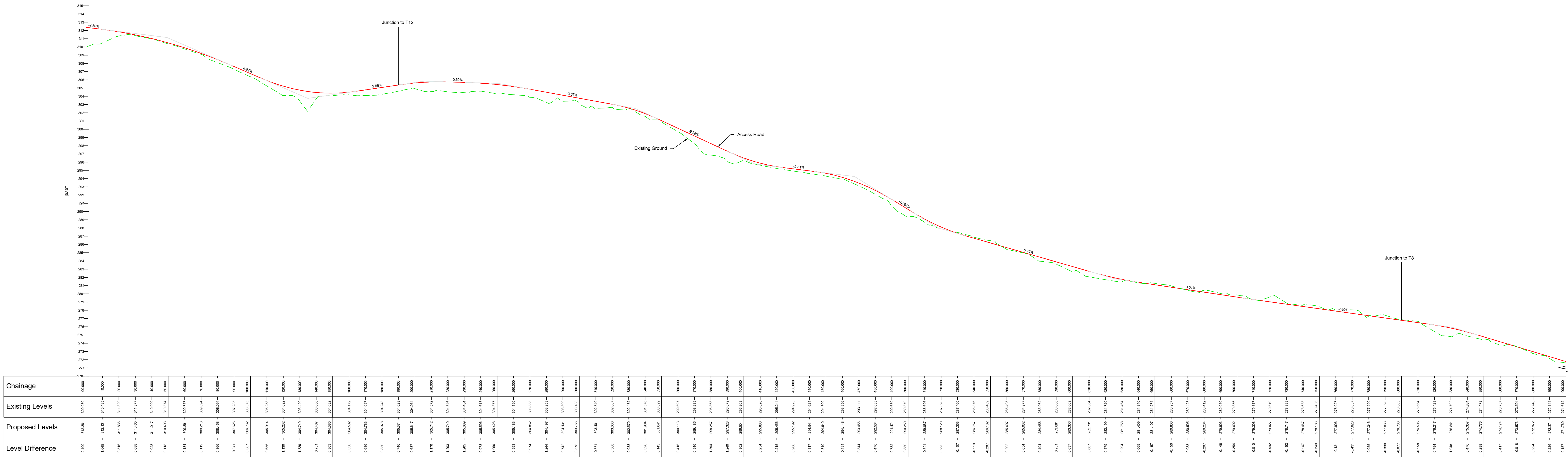
- Notes :**
1. All drawings are to be read in conjunction with all relevant Specifications, Bills of Materials, Architectural, Services and Engineering Drawings.
  2. Any discrepancies between these documents shall be brought to the attention of the Engineer.
  3. All dimensions are in millimetres unless noted otherwise.
  4. All levels are in metres related to Ordnance Datum.
  5. Drawings are not to be scaled.
  6. The finished layout may be subject to micro-siting due to unforeseen ground conditions. The extent of flexibility will be site specific and should generally not extend beyond 20 metres.

**Legend :**

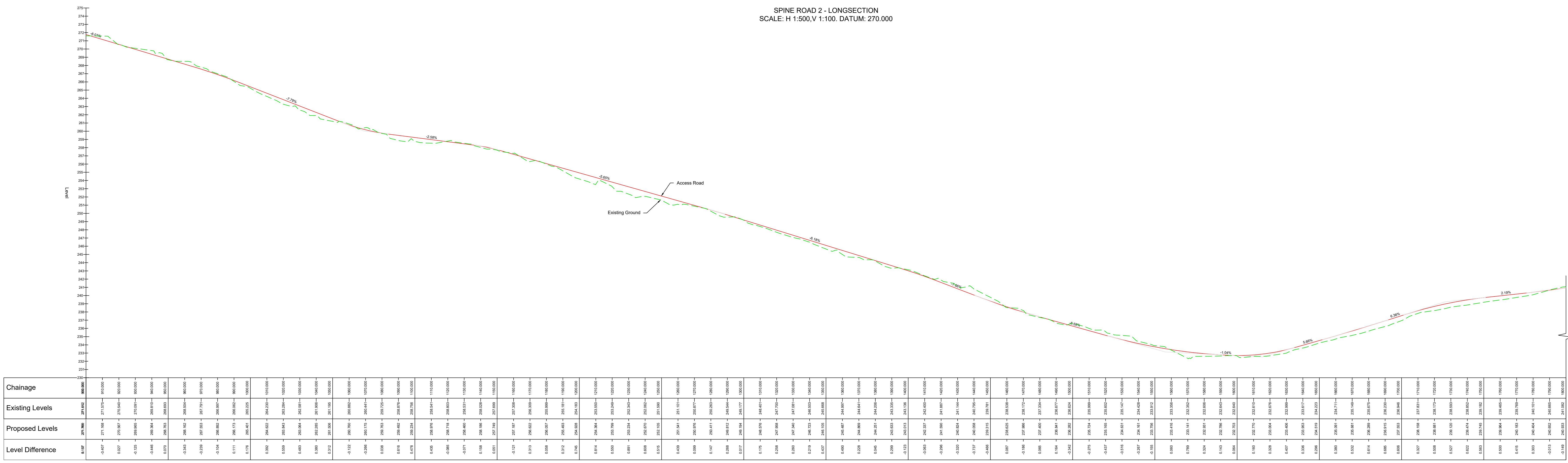
- Existing Ground Profile
- Proposed Access Road Profile

**Reference Drawings :**

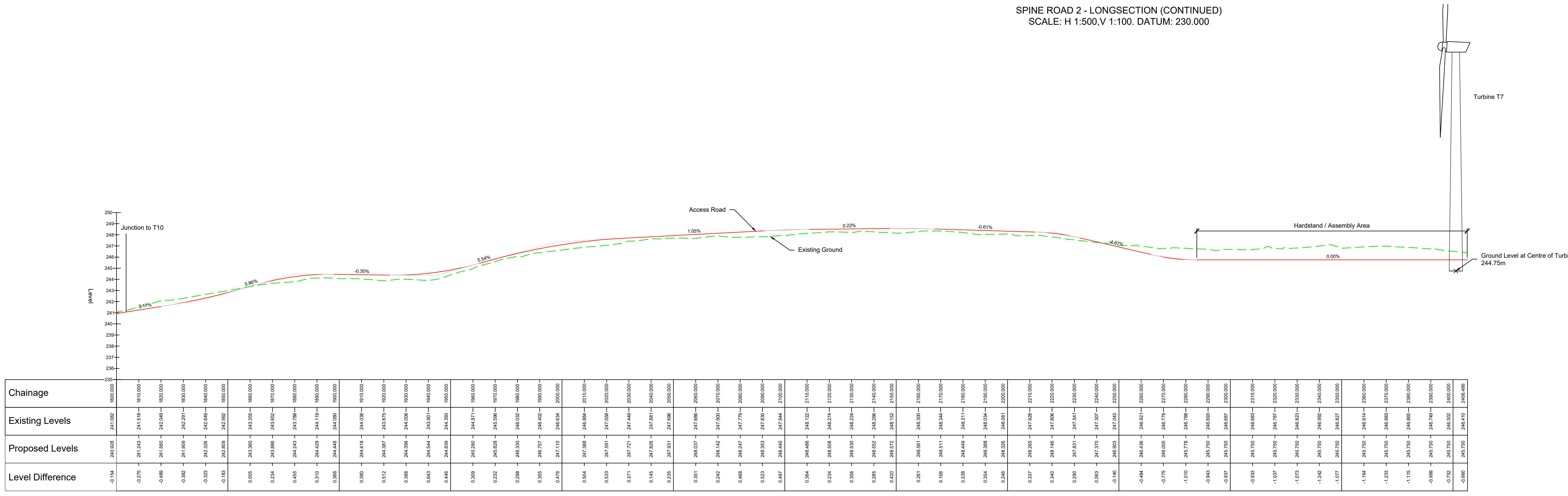
- 19107-5032 Road Alignment Locations
- 19107-5005 Site Layout Master Sheet
- 19107-5026 Culvert Crossing Details



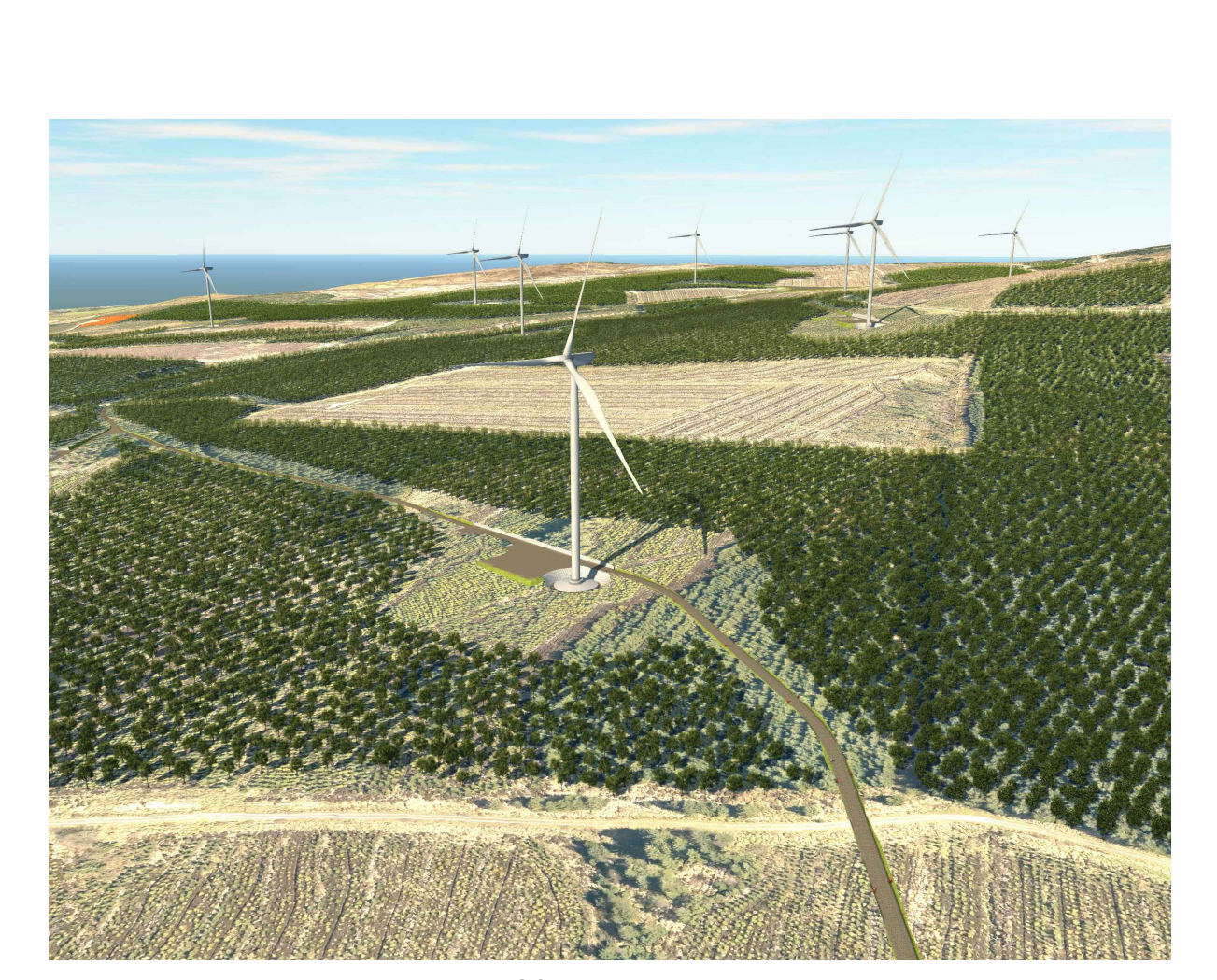
SPINE ROAD 2 - LONGSECTION  
SCALE: H 1:500, V 1:100, DATUM: 270.000



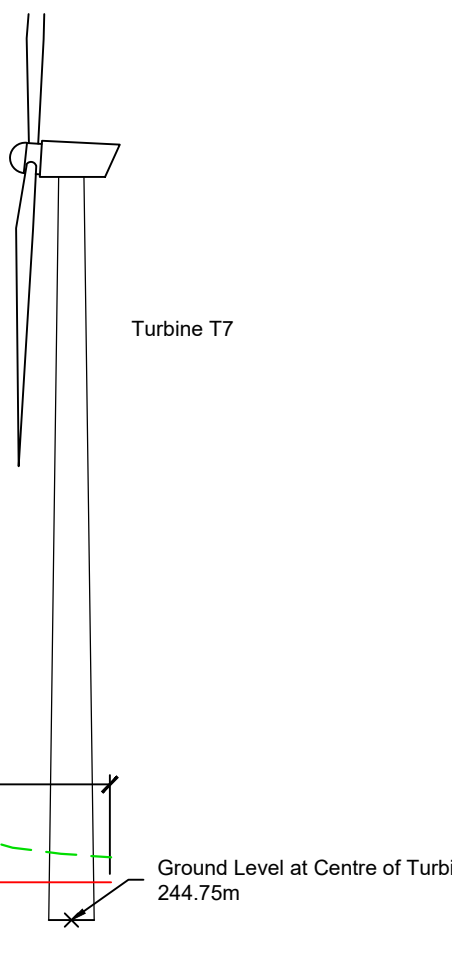
SPINE ROAD 2 - LONGSECTION (CONTINUED)  
SCALE: H 1:500, V 1:100, DATUM: 230.000



SPINE ROAD 2 - LONGSECTION (CONTINUED)  
SCALE: H 1:500, V 1:100, DATUM: 235.000



3D View Of Proposed Turbine T7



Turbine T7

Issue No.	1	2	3	4	5	6	7	8	9	10
Date	03/11/2019									
Drawn By	JK									
Checked By	JK									
Approved By	JL									
Scale	As Shown									
Drawn	JK									
Checked	JK									
Approved	JL									
Issue No.	19107-5036									
Date	07/11/2019									
Drawn	JK									
Checked	JK									
Approved	JL									

Malachy Walsh and Partners  
Consulting Engineers  
Cork | Tralee | London | Limerick

Reese Point,  
Bryanville,  
Tralee,  
Co. Kerry.

Tel: +353 (0)69 9123404  
Fax: +353 (0)69 1252505  
E-Mail: malaw@malwp.ie